

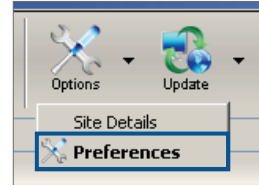


Quick Start - Conduit Settings

Vision

1

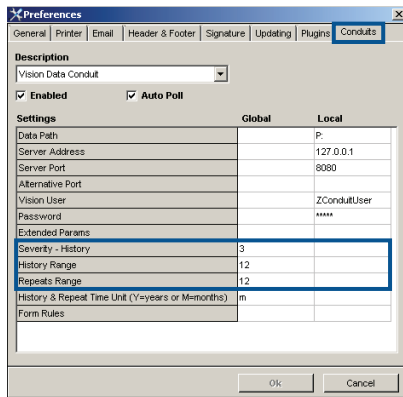
Open the 'Preferences' window.



2

To filter data fields on a referral form, the following conduit settings can be adjusted according to user preference:

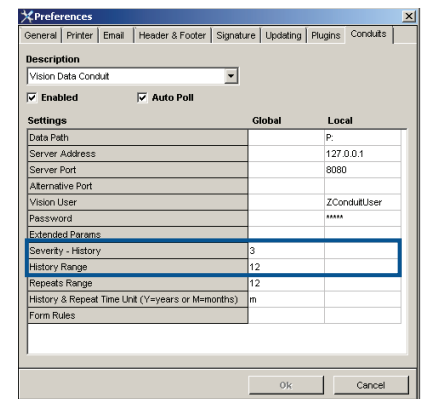
Severity - History, History Range, and Repeats Range.



3

Severity - History and History Range (years or months)

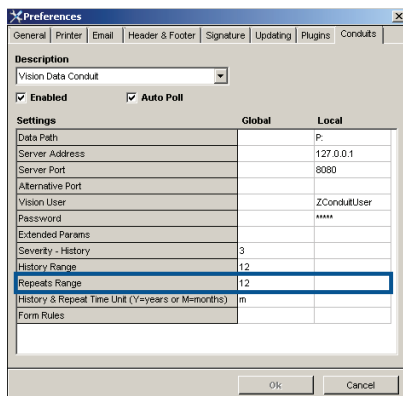
If '3' is inserted to 'Severity' and '12' into 'History Range', 12 years or months of up to Severity 3 (i.e. priority 1, 2 or 3) patient history will be displayed.



4

Repeats Range (years or months)

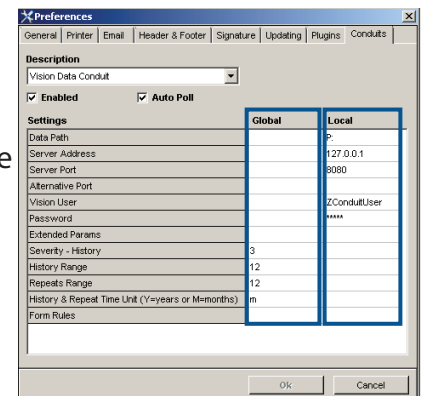
If '12' is inserted to 'Repeats Range', 12 years or months of Acute Medication and Repeat Medication will be displayed.



5

Global versus Local Conduit Settings

Changing the 'Global' settings will apply the settings across the entire practice. Changing the 'Local' settings will apply the settings to the workstation.



6

It is recommended to use this quick start guide in conjunction with the 'How to Change Conduit Settings' how-to guide.