

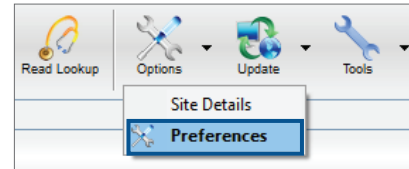


Quick Start - DXS Mail Client Configuration

Practice Wide

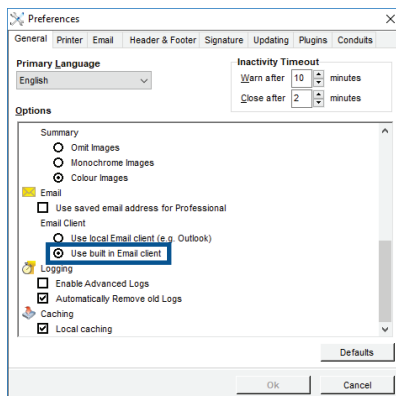
1

Open the 'Preferences' window.



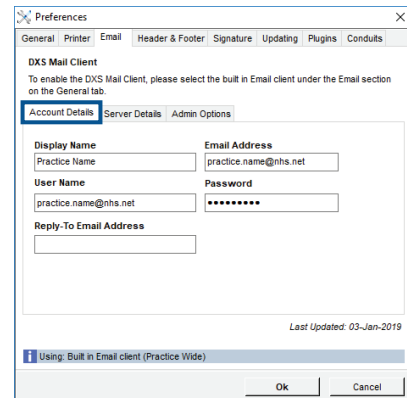
2

Click on the 'General' tab and select 'Use built in Email client'.



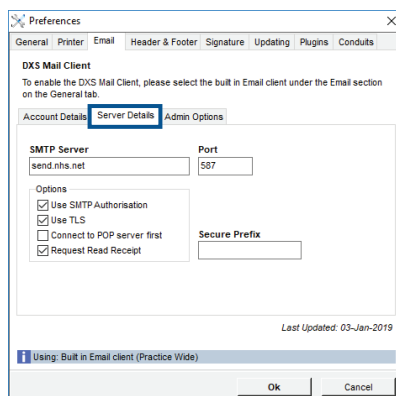
3

Click on the 'Email' tab and enter your account details.



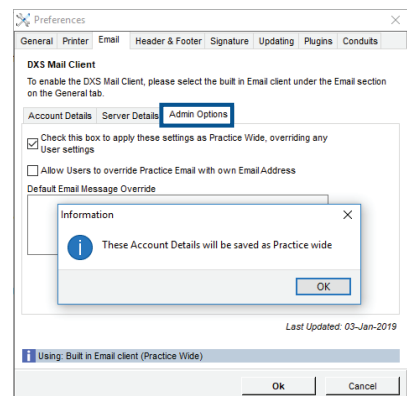
4

Select the 'Server Details' tab and enter the relevant information.



5

Select the 'Admin Options' tab and tick the required options.



6

Send a test email (e.g. education leaflet) to confirm that the email configuration is correct.

